

St Pancras Church



Annual Report for 2018

*Presented at the
Annual Parochial Church Meeting
28th April 2019*

St Pancras Church Trustees
Parochial Church Council 2018

Vicar	Revd Anne Stevens	Chair
UCL Chaplain	Revd Charlotte Bradley	
Readers	Michael Ogden Olyve Johnson	
Churchwardens	Dorothea Hackman Duncan Lamont	(also Hon Treasurer)
Elected	Miriam Campbell (2019) Patrick Comissiong (2019) Rita Costa Alves (2019) Jean Hill (2021) Jonathan Lewin (2021) Anne Rouse (2021) Tony Rouse (2020) John Thomlinson (2019)	Deputy Churchwarden <i>Deceased June 2018</i> Deputy Churchwarden PCC Secretary

*The years in brackets are when the trustee's
term expires at the APCM in April.*

Deanery Synod Reps 2017-2020

Dorothea Hackman
William Edgill

Contact Details

Website www.stpancraschurch.org
Twitter @StPancrasChurch
Tel 020 7388 1461
Email office@stpancraschurch.org
Address St Pancras Church, Euston Road, London

Vicar's Report



Welcome to this year's Annual Report from the team at St Pancras Church.

Standing where we do on one of the busiest crossroads in London, this has always been a place where the church meets the world, and this report reflects our engagement with the local community and the wider world as well as our internal life together.

This is very much part of our Mission Action Plan, which can be read on our website. We enjoy working in partnership with other churches, charities and agencies, and this area of our work has expanded over the last twelve months.

We have recently welcomed Revd Peterson Feital and the Haven + charity to St Pancras, providing them with a Central London base for their chaplaincy work among people in the creative industries.

This dovetails well with our own emphasis on music and art, and we hope that it will help us offer more opportunities to welcome people into the church for services and other events. Peterson will also be joining us for Sunday services every few weeks.



Revd Peterson Feital

Our relationship with Camden Council has been forged over many decades, and this has borne fruit this year in a new way. With so many of our local green spaces being lost to HS2, I am delighted to report that Camden have obtained a grant from the Greater London Authority to do some landscaping work in our south garden. We are in talks with a market company to bring more food stalls to the garden so that it can become a real hub for the community on weekday lunchtimes.

The plan to extend our opening hours is also well under way. With the help of Revd Liz France, an old friend of St Pancras, we are now able to open on Fridays as well as on other weekdays.

While visitor numbers are up because of all these things, the numbers of people attending services has dropped this year, particularly at the 10am service. We are working hard to try to improve our publicity, and I hope that we can all play our part in helping the congregation grow by attending more often, and by inviting our friends and family to come along with us.

Our spiritual life this year has been deepened by our Lent course, 'The Mystery of God' and by our autumn study of the Archbishop of Canterbury's book 'Reimagining Britain.' The Tuesday lunchtime Study Group remains strong, with local workers and students joining regular congregation members to read the Bible together.



The Bishop of Edmonton visited us in September to confirm Zahid Azram, Ghizlaine Jebni and Jean Hill.

Another confirmation service is planned for 19 May this year when the bishop will be visiting St Pancras during the Music Festival.

As ever, I am grateful to the staff team for all their hard work. Alain, Bryan & Rosa keep the church and hall in good condition, helped by our weekly visits from the Community Payback Team. Deseline keeps our finances in good order and Jane continues to provide much needed admin support in the office. Anne has done a great job managing the Crypt Gallery, and Audrey continues to tend the gardens with great care.

I am also grateful to all the work the PCC put in behind the scenes, particularly our Churchwardens Dorothea and Duncan, and John our secretary. John will be standing down this year, and we would be very pleased to hear of anyone who can take on that role. I am sad to report that one of our PCC members died this year. Patrick Comissiong had worshipped at St Pancras ever since he arrived in the UK in the early 1960s and is greatly missed.

Finally, I would also like to thank my colleagues Charlotte, Michael & Olyve for all they have done this year to sustain our worship and ministry. Thanks also go to Chris and the choir, to Eddie, Michael, Anne and Tony for all they do to prepare the church for our worship; and to everyone who helps on the Welcome Team at our services.

Anne Stevens

Churchwardens' Report

Sincerest thanks to all volunteers, especially our deputy wardens, ex-wardens, PCC members, safe-guarders and sidespeople as well as to the Vicar and all St Pancras staff, for their work over the last twelve months.

Charities: St Pancras Lands Trust continues to distribute dividends from investments to the 15 Anglican churches whose parish boundaries are completely within the ancient parish, and lodge accounts with the Charity Commissioners, as is the case with our other charities.

St Pancras Charities looks after a range of ancient and historic St Pancras Church legacies and investments. From the interest, as well as benefitting the PCC income, grants have been made to a range of activities in the parish. The St Pancras Thanet Street Trust, a charity with which the Church has significant involvement, has continued to support the Kings Cross & Brunswick Neighbourhood Association, the Cold Weather Shelter, the London Festival of Contemporary Church Music, PSALM, and Euston Foodbank.

St Pancras Church House in Lancing St, as well as the Cold Weather Shelter Offices, houses the Euston Foodbank, a separate charity set up with six local churches under the auspices of the Trussell Trust. It continues to grow to meet the increasing food poverty in our community in these times of austerity. Nearly six thousand individuals were supported with food parcels over the last year, with 70-90 households supported each week. The main reason people need help is low income with the roll out of universal credit causing significant destitution and distress with five week waits for income. Over 40 volunteers help regularly and the charity is moving towards strengthening infrastructure with paid co-ordinator posts. Every third Sunday there is distribution of clothing and food to homeless people in the area with "Hands on Hand out", and a successful meal was organised with them on Christmas Day.

Fabric, Goods and Ornaments: Worryingly ground water level has risen by around a metre which is noticeable in the crypt especially.

Church maintenance was carried out as usual on electrical items, the clock, microphones, computers, photocopier, lights, plumbing, fire extinguishers, the garden mower, the boiler, roof vegetation, gutters, the crypt, organ humidifier, two organs and three pianos. The boilers may need replacing soon.

Maintenance also continues in our hall, Church House, a 1970s building close to Euston station in Lancing Street. It will be interesting to see what demolitions in our community that Crossrail 2 will bring to the east of Euston station, we live in Victorian times when it comes to demolishing the homes of the poor to make way for the development projects of the rich.

A planned cycle of church maintenance continues with cleaning and painting the undecorated walls of the nave and galleries and the under-gallery ceiling, though it takes much longer and more effort to obtain permission from the Diocese to do so.

The south garden will be improved with a grant from the London Mayor's greening fund, and Camden Council HS2 assurances money to provide access to more green space in the local community, given the permanent destruction of St James Gardens, and current repurposing of Euston Square Gardens.

Dorothea Hackman & Duncan Lamont

PCC Secretary's Report

Rev Anne Stevens has continued as ex-officio chair of the PCC, supported by the members, listed at the beginning of this report, who represent a wide range of ages and professions, and bring with them valuable personal skills, knowledge, time and energy to the PCC. All are to be thanked for their contributions over the year.

The PCC has met bi-monthly, thus meeting 6 times over the year, with the Standing Committee meeting in the other 6 months. This arrangement means that the core members meet monthly, enabling important business to be discussed and acted upon swiftly. In between these meetings occasional urgent business needing PCC authorisation has been dealt with by the Vicar via email.

PCC meeting business has covered a range of issues, in particular:

- Finance : Day-to-day income and expenditure have been closely monitored.
 - Fabric : Regular maintenance work continues on both the Church and Hall, and longer-term projects have been discussed.
- Other issues discussed that relate to the wider world have been:
- HS2 : we have continued to be actively involved in the consultations and local campaigns to highlight the impact of this on the parish.
 - Music Festival.
 - Continued support for our link parishes in Cuamba, Mozambique, and New York.

We held a Vision Day in February at which we reviewed progress on our Mission Action Plan. We focussed on enhancing our links with the wider community and improving publicity as well as current and future work on the fabric.

Our spiritual life has been enriched by a Lent Course and a midweek Bible Study. We have also met socially, including a garden party in the summer.

John Thomlinson

Electoral Roll Report

The electoral roll of a parish church is completely renewed every 6 years so that it accurately reflects our current membership and 2019 was one of those years. There are 70 people on the current electrical roll, a decrease from last year's numbers of 111 (a decrease of a third is usual in a revision year). Of those on the roll 15 are resident in the parish. The list is used in Morning Prayer on weekdays and friends who have moved away are regularly remembered. Some members live and work abroad but remain part of the St Pancras community.

Miriam Campbell

Treasurer's Report

The annual accounts for 2018 have been prepared and will be considered for recommendation by the PCC before the Annual Parochial Church Meeting on 28 April 2019. Thanks to our Finance Officer Deseline Djiayep and to our External Examiner Edward Oliver, from the Churchwardens.

During 2018 expenditure was similar to the previous year at £343,348 but income was down by around twenty thousand and expenditure at £343,348 exceeded income by just under five thousand pounds. In the previous year 2017 income was £358,434 and expenditure £342,732.

Disappointingly, our tax refund claim of thirty three thousand for building works was out of time. Expenditure was up some thousands compared to the previous year on church maintenance, staff, choir and office expenses, and the music festival showed a deficit of £3,783 compared to almost breaking even in 2017. The Diocesan Common Fund for 2018 of £84,000, was paid.

Dorothea Hackman

Music at St Pancras

The choir sings on 42 Sundays per year (10.00 Sung Eucharist and 18.00 Choral Evensong) as well as on a number of feast days.

Regardless of our quite modest resources (mostly 4 singers and the Director of Music), a challenging and invigorating repertoire is performed at what is widely seen as a very high standard. We are fortunate to be able to recruit excellent young singers, many of whom move on to full time professional careers, some on the international stage. Music continues to be a very important part of the liturgy and the tradition of St. Pancras.

Music sung at services is chosen to complement the liturgical seasons as well as to give a rich and varied experience of some 500 years of music written for Anglican worship. Our repertoire goes somewhat beyond this and encompasses many works from other traditions and from around the world. Over the last 17 years there has been a significant emphasis on contemporary music.



The London Festival of Contemporary Church Music was established by the Director of Music in 2002. The LFCCM is unique and includes valuable partnerships with London's world class choral institutions as well as many churches, schools and HE institutions. The 2018 Festival included 60 events amongst which the highlights included two evening concerts, a major concert in the National Gallery and a live broadcast of Choral Evensong on BBC Radio 3. Members of St. Pancras gave very generously to support our commissions. The event included numerous World, UK and London premieres sent in to the Call for Scores from around the world, confirming the international standing of the LFCCM.

The condition and reliability of the Gray & Davison organ are now major concerns, and for several weeks the instrument was unusable. The potential restoration of the organ continues to feature in the Parish Mission Action Plan, and we hope that it will not be too long before significant work can be undertaken to save this historic organ from becoming silent.

The small organ by Peter Collins is very useful indeed, especially for Choral Evensong, when the choir sings from the floor of the nave. The organ was designed to be moveable, should the space be required, but not portable. In recent months the Collins organ has been moved a number of times and damage has been sustained to the casework, the front pipes, the lower manual, the bench and a pipe support, and it is important that these significant areas of damage do not signal the beginning of a lack of care for the instrument. We should not forget that that the G&D organ is of historic significance, having been acquired for the church by Henry Smart who shortly thereafter became Organist of St Pancras.

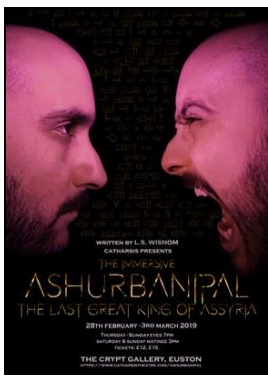
Christopher Batchelor

Crypt Gallery

2018 saw another busy year in the gallery with a wide range of exhibitions and residencies and more performance style events. The sculptures 'Alien' and 'Brothers' attracted a lot of attention on the front church lawn... and will be sadly missed when they leave in July. The range of exhibitions was really varied as usual, providing opportunities for activist groups and also marginalised groups to have a platform for their ideas and events.

We hosted over 30 exhibitions in the Crypt including shows by students from Camberwell, Royal College of Art, The Slade, Central At Martins, and Wimbledon College of Art to name a few. The amount of degree shows has decreased over the past 4 years – but independent shows organised by the students themselves have also increased, which is a reflection on how art colleges operate now.

We continued and developed our Crypt Artist Residency programme which has now become an established way of keeping the gallery open and in use during less busy times of the year. The residencies are arranged as very last-minute bookings and remain flexible and temporary in case of any impromptu filming or paid bookings in the space and this has worked very well. Our most notable residency of 2018 was when the writers Yasmin Chopin, Lily Ann Green Coleman, and Alison Walsh used the gallery as their studio for a week's writing, using the gallery as resource material.



Performance has also played a role in the gallery schedule again this year, with what has become a regular annual booking with the UCL Performance and Drama Society.

Cathartis Theatre also presented a drama set in the court of Ashurbanipal to complement last year's British Museum exhibition about the Assyrian empire.

I also managed to use the gallery on days when the space was not booked for Creative Drawing and Performance workshops. In 2018 we ran drawing events based on Francis Bacon paintings which worked perfectly in the Crypt, and also a fantastic Gustav Klimt event in the main church! Again, adding to the creative use of the space which will continue into 2019.

Our relationship with local organisations has continued with a performance in the grounds of the church by students at The Place, and also events for the Bloomsbury Festival in October, both of which are continuing into 2019. The gallery still hosts a range of graduate student shows.

Following the 'flood' in March this year where the rise in the water table causes the gallery to become very wet – with 200 years' worth of silt lifting off the floor stones - we are in the process of cleaning up the floor which we hope will give the gallery a new lease of life.

2019 is already looking very busy with lots of shows, events and residencies booked in, so I hope the success of 2018 will continue!

Anne Noble-Partridge

South Camden Deanery Synod Report

The South Camden Deanery Synod met on June 14th 2018, at St Michael, Camden Town. There was an address by the Revd. Nigel Taylor on Whole Life Discipleship.

The North and South Camden Deanery Synods met together on October 18th 2018, at St James, West Hampstead. Various speakers spoke on the problem of knife crime, and a motion was prepared for Diocesan Synod. The meeting was well attended, but South Camden Deanery Synod was not quorate.

South Camden Deanery met on February 26th 2019, in the Crypt of Christ the King, Gordon, Square. The Synod undertook a mapping exercise, led by the Revd. H. Miller. There was a discussion of the Bishop's Mission Order for Kings Cross Church.

The next meeting of North and South Camden Deanery Synods will take place on Monday May 20th, at St Pancras at 7pm, when Bishop Sarah will be there. All are welcome, as is the case with all Deanery Synod meetings.

William Edgill

St Mary & St Pancras School

The school had its OFSTED inspection just before the end of the spring term 2019. The result has yet to be announced.

The Head Teacher Jules Belton and the staff team have worked extremely hard throughout the year to maintain standards, which are broadly in line with the national average – a tremendous achievement in one of the poorest wards in the country.



Yr 3 working on the story of Peter's denial of Jesus

The school's Christian ethos continues to form a major part of their mission statement: 'Every aspect of our work is underpinned by our distinct Christian values; friendship, forgiveness, endurance, respect and thankfulness.'

Greg Powell and I represent the church on the governing body, which meets every month in term time. I also serve as the Safeguarding Governor and take assemblies every fortnight during term time.

Anne Stevens

UCL Chaplaincy

I returned to work in September 2018 after nine months on maternity leave – my thanks must go to the Revd Andrew Norwood for providing cover for my role at UCL during the time I was on leave. In November a photography exhibition took place at UCL entitled ‘God in Gower Street: A Year of Faith at UCL’ which showcased various religious celebrations and events taking place on campus during the academic year 2017-18. I organised this before going on leave and just let the photographer get on with his work whilst I was away! The opening of the exhibition was a wonderful celebration of faith at UCL and the exhibition team received great feedback from staff and students.

In February 2019 the UCL New Student Centre opened; a stunning new building which connects Gordon Street to Gower Street, provides 1000 new study spaces and (I think most importantly!) finally provides beautiful spaces for UCL students to pray, worship and meditate, as well as a chaplaincy office. This has significantly changed both my role and the profile of religion and belief at UCL.



Space for Faith at UCL

As I write we are preparing for the first meeting of the new Interfaith Forum at UCL next week and the rolling out of religious literacy awareness and training for staff and students. It finally feels as though UCL has shaken off the old adage of being ‘Godless of Gower Street’ and is embracing and rejoicing in the faiths of its staff and students.

Revd Charlotte Bradley

Local Ecumenical Activities



Ministers from all the local churches and chaplaincies meet occasionally to share news and support one another.

Our congregations also joined together on Good Friday, when we carried a cross around the streets of Euston and Kings Cross, stopping to pray at each of the local churches.

Anne Stevens

Working with the local community

As a church we continue to be closely involved with the local community, working in close partnership with people of all faiths and none on a range of issues and activities.



We were pleased to host the Mayor's Civic Service for Remembrance Day this year, at which the Area Dean, Revd Jonathan Kester was the guest speaker.

The choir also sang in Bloomsbury Square in the evening as a beacon was lit to commemorate the centenary of the WW1 Armistice.

Our work with the Euston Foodbank is described in detail in the Churchwardens' report. In addition to this many of the congregation are governors at local schools, including St Mary & St Pancras, Netley and Christ Church Schools. Sally Ede and I are on the Board of the Kings Cross & Brunswick Neighbourhood Association which runs most of the area's youth work, together with specialist activities for migrant communities and older people. I took over from Revd Christopher Cawrse as the Chair of KCB this year. Dorothea Hackman is chair of the Camden Civic Society and organizes most of the Euston Foodbank's day-to-day activities. Tony Rouse continues to serve on the Board of the Camden Churches Cold Weather Shelter. I am also a Trustee of the Tavistock Square Memorial Trust.

Anne Stevens